

MicroRegion TOLŠTEJN

Joint SECAP of 7 small Czech municipalities

Dolní Podluží, Doubice, Horní Podluží, Chřibská,
Jiřetín pod Jedlovou, Rybníště, Varnsdorf

**MICHAL
SVOBODA**

- ✓ Energy Manager of LAG Cesky sever
- ✓ Chairman of City Council Energy Committee at the Municipality of Varnsdorf
- ✓ Sustainable Energy Consultant of the Association of Small Municipalities of the Czech Republic
- ✓ Community Energy Consultant of the National Network of LAGs

svoboda@masceskysever.cz T: +420 601 315 003

MicroRegion TOLŠTEJN

General information



19.9 K inhabitants



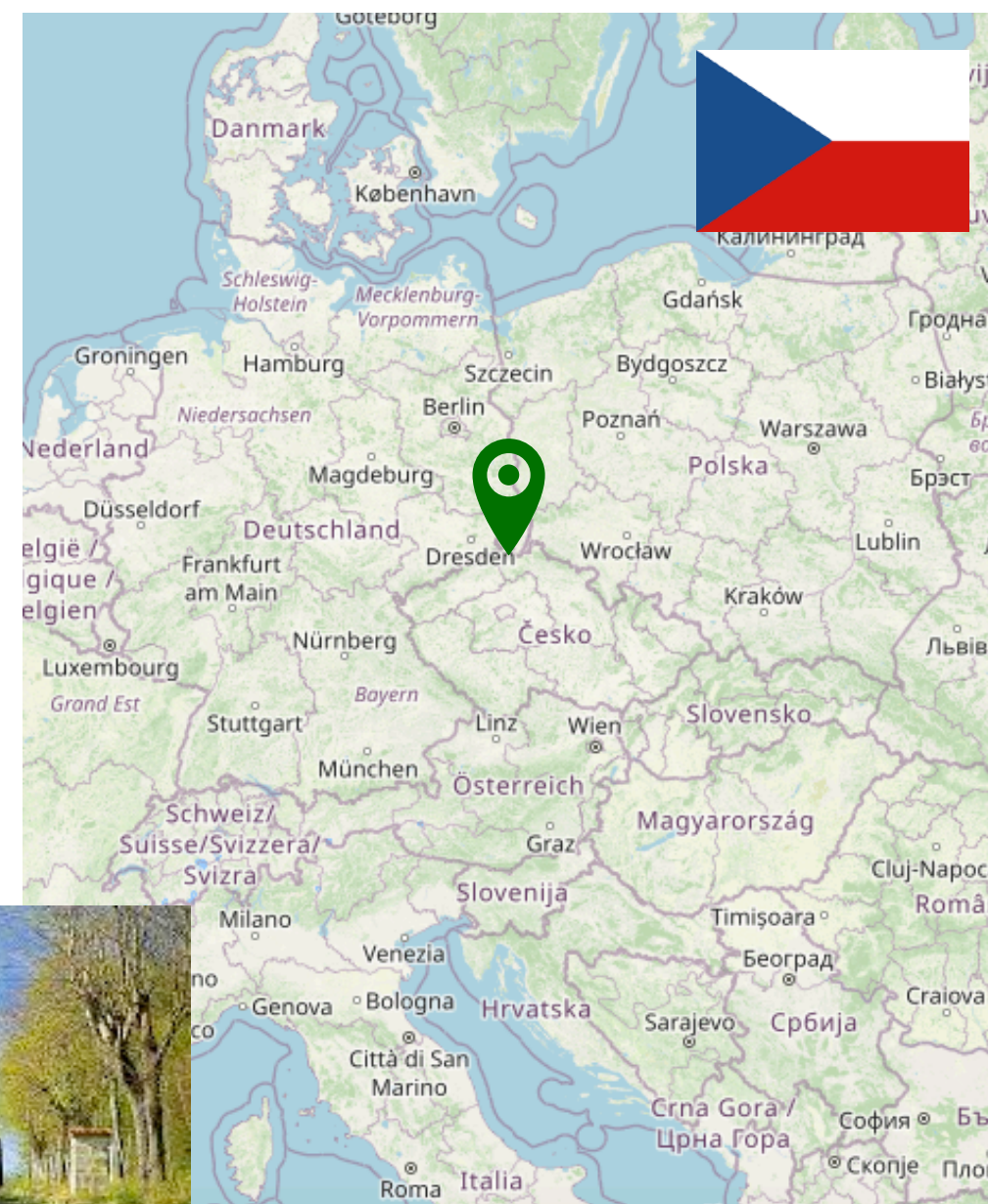
108 Km²



**2 towns
5 villages**

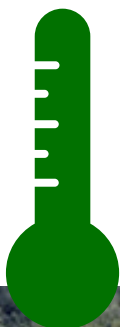


**socio-economically
among the poorest
regions of the country**



MicroRegion TOLŠTEJN

Key concerns in energy & sustainability



HEATING

transition to local independence & renewables



ENERGY SHARING

new Czech legislation beginning in 2024



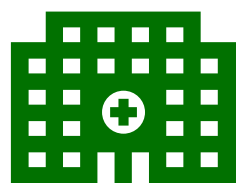
ENERGY SOURCES

windy area, stable water flows, biomass potential



WASTE TO ENERGY

waste management system transition



CRITICAL INFRASTRUCTURE RESILIENCE

transition to local means of critical self sufficiency

Decentralised energy & sustainability

As a means of economic re-start of the microregion

THE
VISION

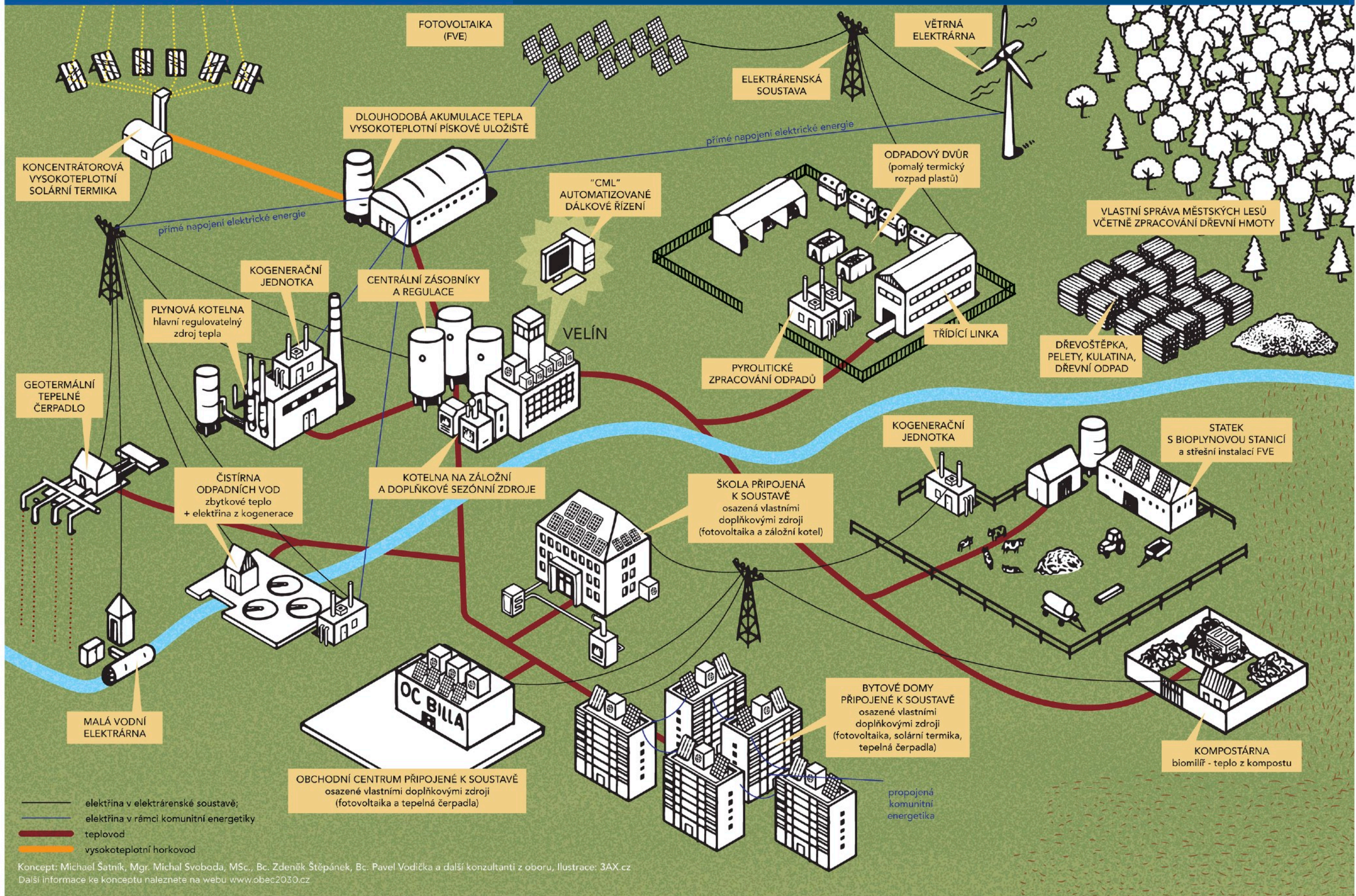


Our region is often portrayed in terms of social backwardness, ethnic and class riots, prostitution, corruption and bankruptcy.

We trully believe the new means of local sustainability, energy self-suficiency and environmental opportunities will help trigering the socio-economic RESTART.



SMART SOLUTION VARNSDORF – the plan for 80% self sufficiency in public sector until 2030

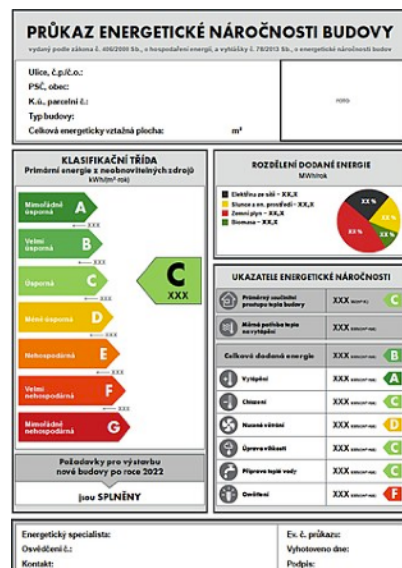
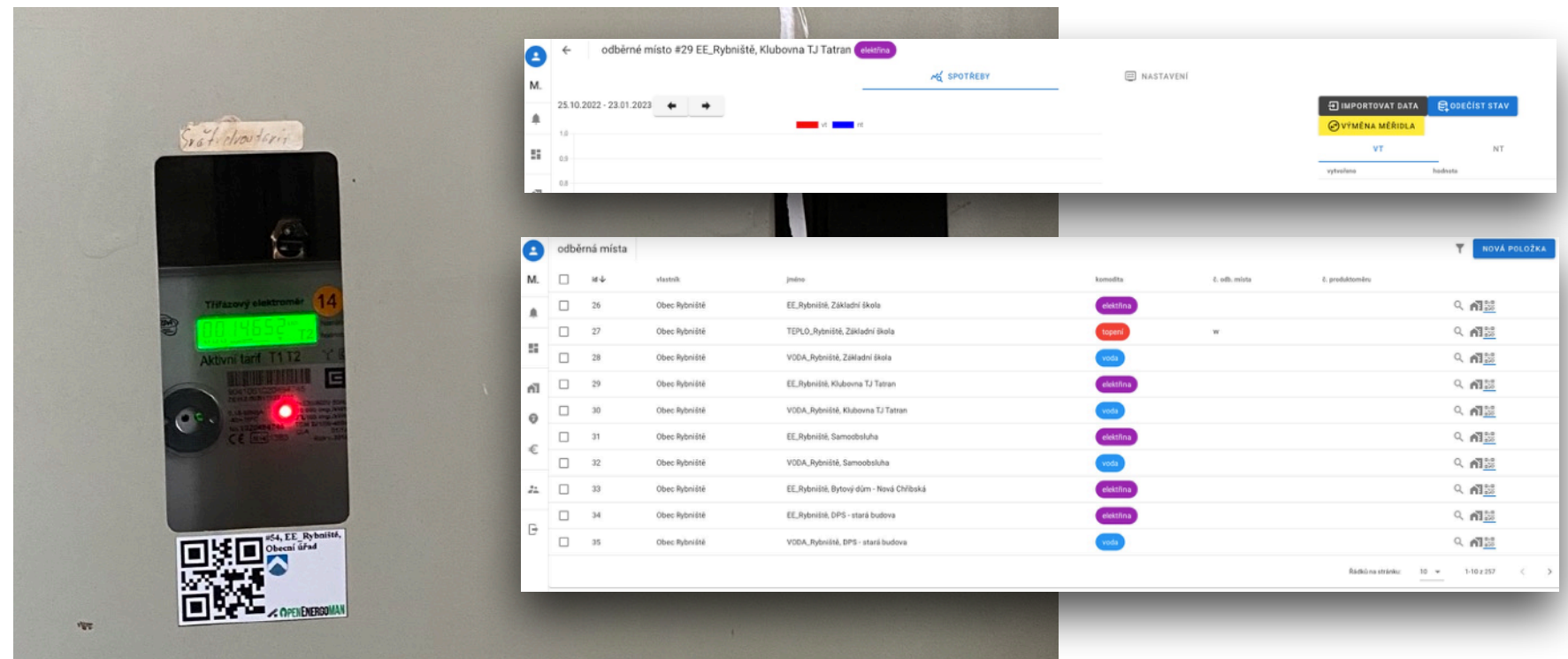


Energy management

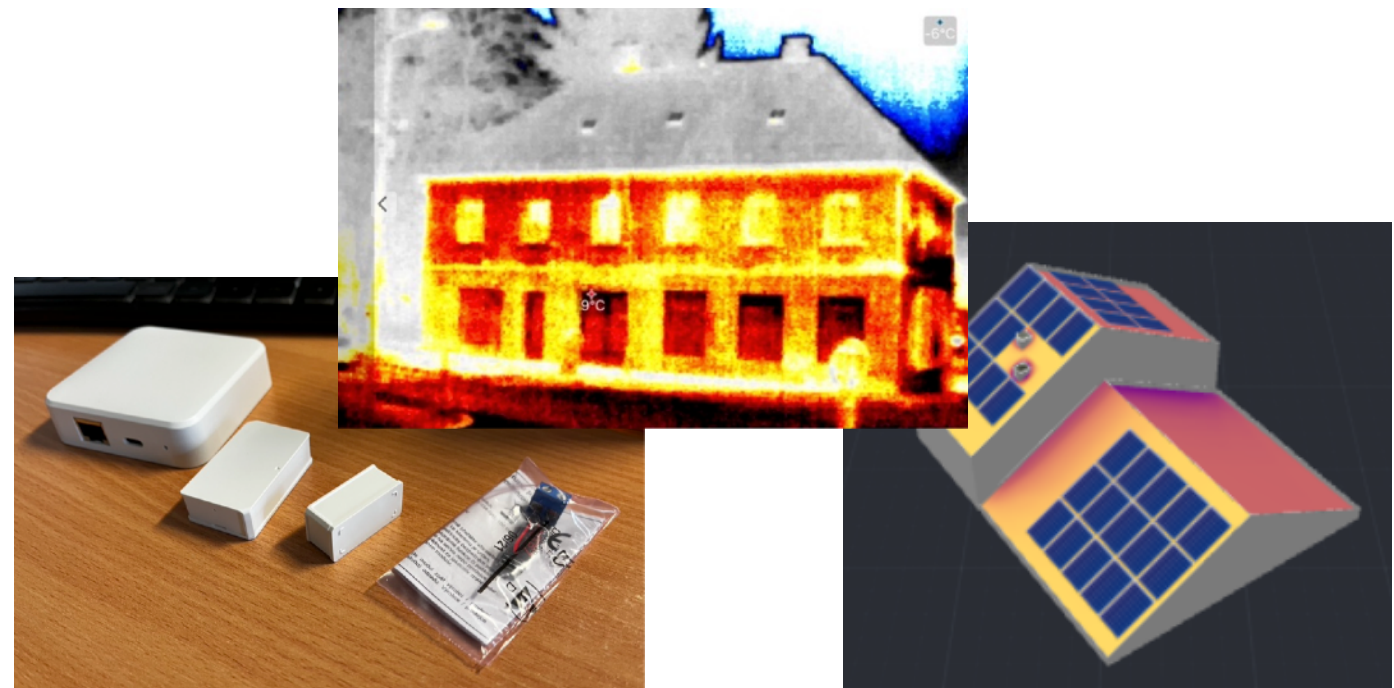
First step towards an efficient energy community

ENERGOMAN

OpenSource software solution developed together with Open Cities - platform for digitalisation and democratisation of local government.



- ☑ Shared system across participating villages.
- ☑ Prioritised consumption points & frequency of measurement.
- ☑ Definition of roles and responsibilities.
- ☑ Manual & online data collection.
- ☑ Self developed smart-meters.
- ☑ Thermal imageing.
- ☑ Action plans in energy savings and source instalations.



Working and brave community

Used not to expect from others but help themselves

